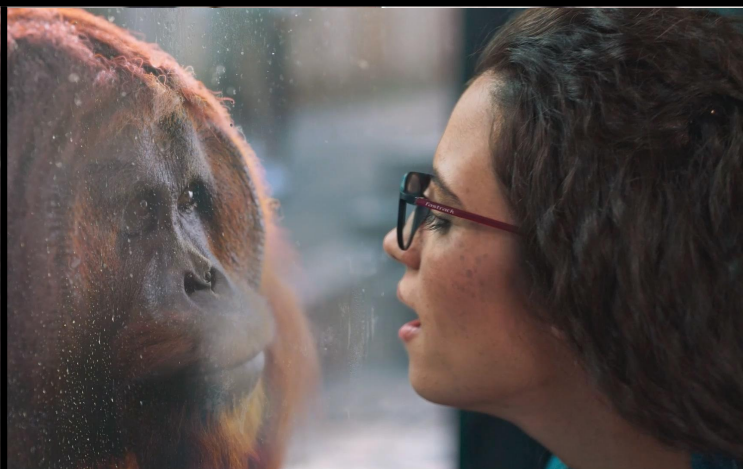
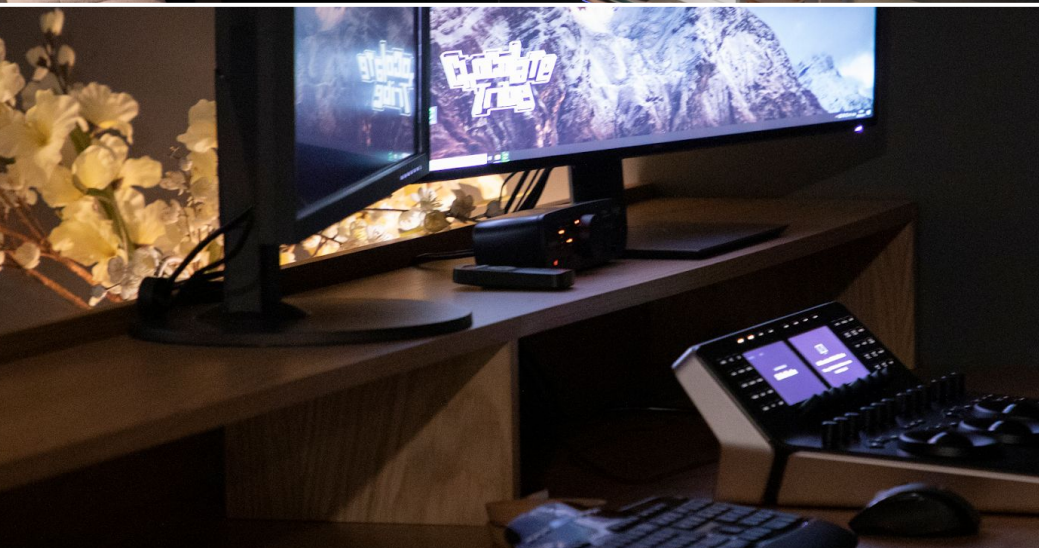


# Chocolate Tribe







# ABOUT US

Chocolate Tribe is an award-winning studio with offices in both [Johannesburg](#) and [Cape Town](#), South Africa.

The company, founded in 2014, specializes in **VFX, Animation** and **Content Development**. Our core business is in Film, TV Series, Advertising and Interactive Experiences.

Our strategic, creative, technical and in-depth industry knowledge is a culmination of decades of international industry experience. Our key focus is on quality, client service, production pipeline and in-house tool development and constant artist development.





# ANIMATION

## Selection of Services Offered

### PRE – PRODUCTION

Ideation  
 Story Development / Scripting  
 Character & Environmental Design  
 Storyboarding  
 Animatic / Blocking

### PRODUCTION

Scene Layout  
 R & D  
 Character & Environmental Modeling  
 Texturing  
 Character Rigging / Setup  
 Visual Effects  
 Lighting  
 Rendering

### POST – PRODUCTION

Compositing  
 2D VFX / Motion Graphics  
 Colour Grading  
 Online  
 Final Delivery

For any further services, please contact us.





# VISUAL EFFECTS

## *Selection of Services Offered*

### PRE – PRODUCTION

VFX Planning  
Previs  
Creature & Character Design  
Concept Art

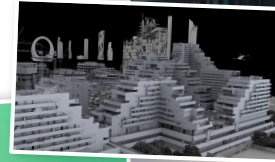
### PRODUCTION

On-set VFX Supervision  
Data / HDRI Capturing  
Texture and Reference photography  
Scene Measurements  
Chrome & Grey Balls  
Motion Capture  
Post Viz

### POST – PRODUCTION

Digital Matte Painting  
Visual Effects  
Character / Creature Rigging  
3D Character / Creature Animation  
Camera Tracking / Matchmoving  
Crowd Simulation  
2D Cleanup  
Compositing  
Colour Grading  
Final Delivery

For any further service queries, please don't hesitate to reach out.



Chocolate  
Tribe

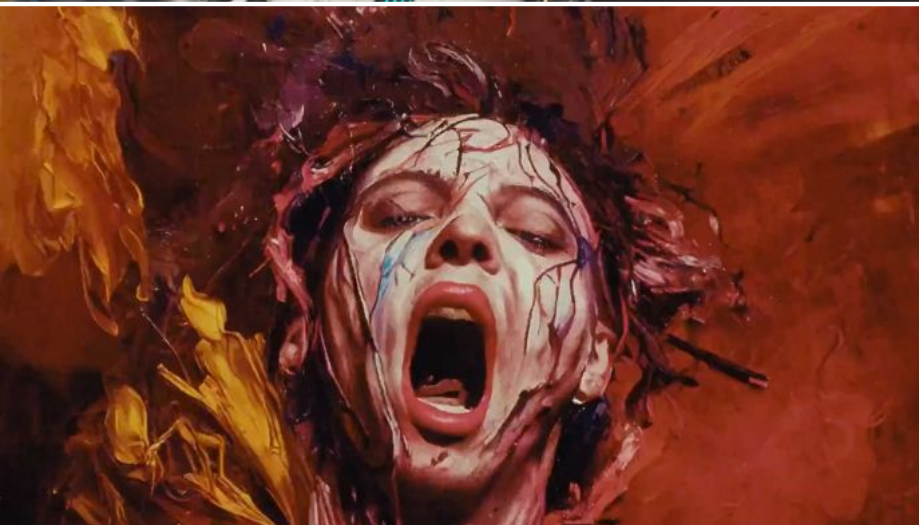


# CONTENT DEVELOPMENT

Alongside client work, Chocolate Tribe is actively developing its own original IP, as well as content with industry partners for the big and small screens. We are committed to creating high-quality global content with a keen focus on innovative storytelling, memorable characters, strong design and immersive world-building.







# AI SERVICES AND TECHNOLOGY

Our industry - and the world at large - constantly evolves.

At Chocolate Tribe, we stay ahead by investing in ongoing training and cutting-edge technology. We don't shy away from new and upcoming techniques; we embrace them as vital tools in our creative toolkit. For example **Unreal Engine**, **AI** and **machine learning** to name a few.

AI-driven processes aren't a replacement for human ingenuity but a way to streamline workflows and boost our production capabilities. By automating routine tasks and building robust data pipelines, we spend less time troubleshooting and more time crafting exceptional work.

We also support a truly hybrid workplace, welcoming clients and collaborators from anywhere in the world.

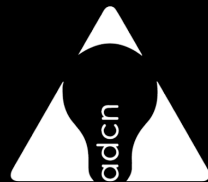




**CICLOPE**



**kidscreen  
AWARDS**



\* Selection of awards

# AWARDS & NOMINATIONS

Chocolate Tribe is a multi-award-winning company, recognized for its exceptional VFX and Animation work. Our dedication to innovation and quality has earned us prestigious awards from around the world.

We work closely with global production companies, top brands and agencies, delivering stunning stories and visuals for a diverse range of projects, such as films, episodics, commercials and interactive experiences. We continue pushing creative boundaries, solidifying our position as industry leaders and narrative changers.



# WHY WORK WITH CHOCOLATE TRIBE

At Chocolate Tribe, we're incredibly proud to collaborate with a diverse range of partners, from the global streaming giants, to innovative agencies and leading production companies. We see each project as a collaborative partnership, where we bring our passion, creativity, and technical expertise to realise your vision.

We believe in building strong, lasting relationships based on trust, open communication, and a shared commitment to excellence. Whether it's producing an animated series, developing IP for a live action feature film, crafting a photorealistic creature for your next project or bringing your brand story to life. We approach every project with the same amount of delicious dedication and meticulous attention to detail.

Our network and data structure has been designed with security in mind, and is regularly tested to avoid any data breach. Trusted by our partners, such as Netflix, Disney and Paramount, your *project data is safe with us*.

**Curious to learn more? Contact us and let's set up a call.**



**NETFLIX**

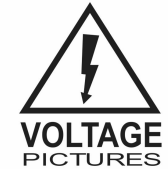
**LIONSGATE**

**showmax**

**prime**



**Ogilvy**



**SAATCHI & SAATCHI**

**QUIZZICAL**  
PICTURES



**NEDBANK**



**Investec**

**PARKWOOD**  
ENTERTAINMENT



\* Selection of clients







# THE TEAM

Chocolate Tribe is driven by a team of multifaceted and multicultural innovators who are constantly pushing the boundaries to keep up with the latest changes and innovations. Beyond our weekly training sessions, we founded **AVIJOZI** - a skills-development event now run independently under **AVIJOZI NPC** - to foster industry growth and share knowledge across our community (see the next page for more information).





# AVIJOZI

Where Creativity and Technology Meet

Annually, Chocolate Tribe organises AVIJOZI. In its 4th year, AVIJOZI has become *the* Animation, Film, Visual Effects and Gaming industry event and festival. The 2-day long free-access event is geared towards nurturing the next generation of artists and creative technologists in Africa. The event hosts about 80 masterclasses, behind the scenes, talks and demonstrations, alongside dinners, screenings and competitions, and attracts over 5000 people.

Visit [www.AVIJOZI.com](http://www.AVIJOZI.com) for more info.





**Interested to learn more or have a  
project you'd like to discuss?  
Get in touch with us.**



[info@chocolatetribe.co.za](mailto:info@chocolatetribe.co.za)



+27 11 327 6346



[www.chocolatetribe.co.za](http://www.chocolatetribe.co.za)  
[www.chocolatetribe.co.za/reels](http://www.chocolatetribe.co.za/reels)



Johannesburg & Cape Town



Nosipho Maketo-van den Bragt (CEO)  
[nosipho@chocolatetribe.co.za](mailto:nosipho@chocolatetribe.co.za)



VFX | Animation | Content Development

**THANK YOU**